

**SOUTHLAKE MARKETPLACE
SOUTHLAKE, TEXAS**

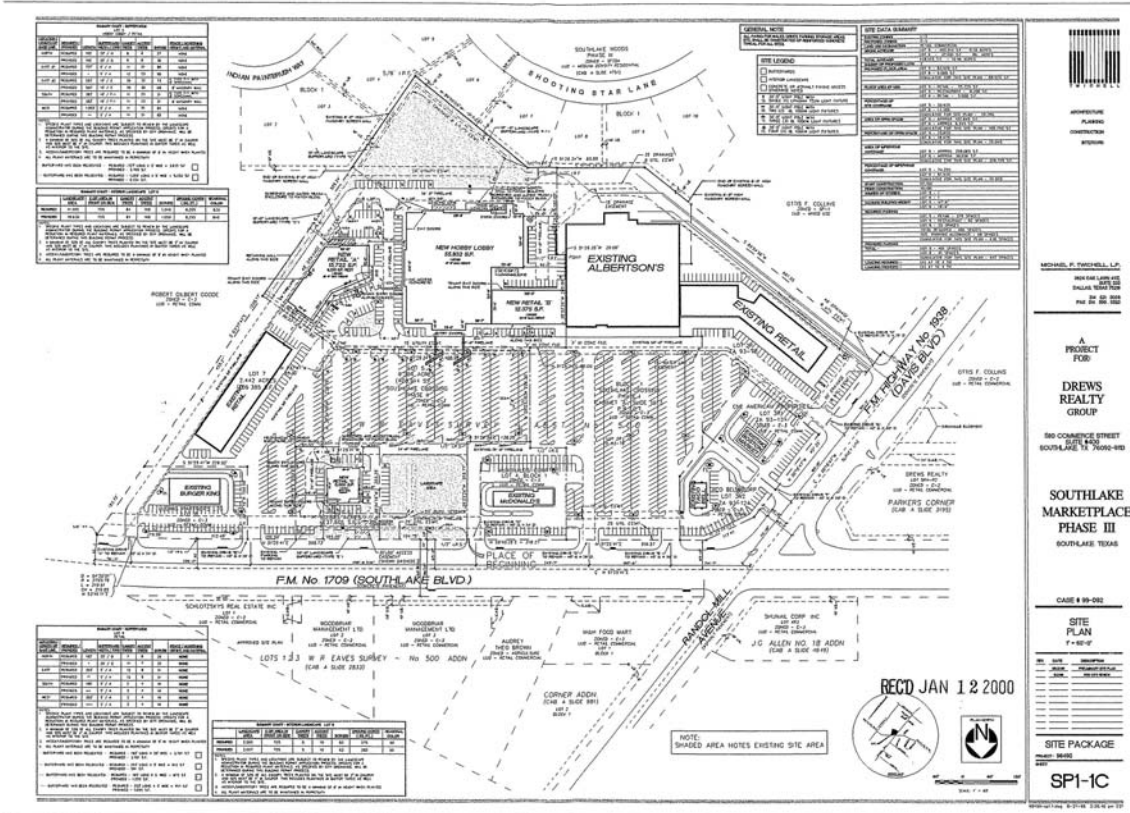


OVERVIEW:

- 24.1 acres
- Zoning: "C-3" General Commercial District
- 210,000 s.f. of retail and restaurant uses

CONCEPT: Southlake Marketplace is a comprehensively planned development incorporating 210,000 square feet of retail and restaurant space.

LOCATION: The Southlake Marketplace project is located on approximately 24.1 acres on the southeast corner of West Southlake Blvd. (F.M. 1709) and Davis Blvd. (F.M. 1938).



PROJECT SCHEDULE:

Phase I opened for business in 1994.
Phase II opened for business in 1996.
Phase III opened for business in 2001.

FINANCIAL ISSUES:

Southlake Marketplace has an estimated construction value of \$30,000,000.



TENANTS: (Confirmed as of January 2005):

- Albertson’s
- Art USA
- AT&T Wireless Store
- Atlantis Scuba LLC
- Bank of America
- Benny’s Bagels
- Bice’s Florist
- Blockbuster Video
- Boston Market
- Brook Mays Music
- Carlson Wagonlit / Main Street Travel
- CiCi’s Pizza
- Comet’s Cleaners
- Cowtown Sushi
- Curves for Women
- Donut Place
- Dr. Kurt Calender-Family & Cosmetic Dentistry
- Game Stop
- GNC
- Golden China Restaurant
- Hobby Lobby
- Holly’s Hallmark
- J. Lee Pettigrew DDS
- McDonald’s
- Old World Salons Two
- Planet Beach Tan
- Pro-Cuts
- Prudential Texas Properties
- Ron Groves DDS – Orthodontist
- Southlake Vacuum
- Subway
- Taco Bell
- The Gift Store at Southlake

CONTACTS: The following contacts are familiar with the Southlake Marketplace project:

Listing Broker

Drews Realty Investments
John Drews
(214) 252-9009
(214) 252-9010
jdrews@drewsri.com

City of Southlake

Economic Development Department
(817) 748-8039
econdev@ci.southlake.tx.us
www.southlakesites.com