



# Village Center

## PROJECT PROFILE

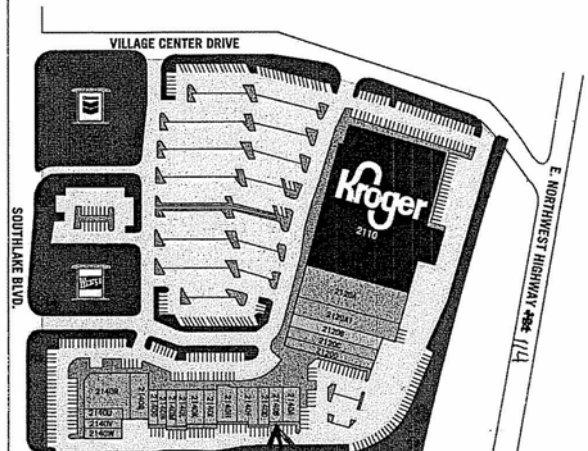
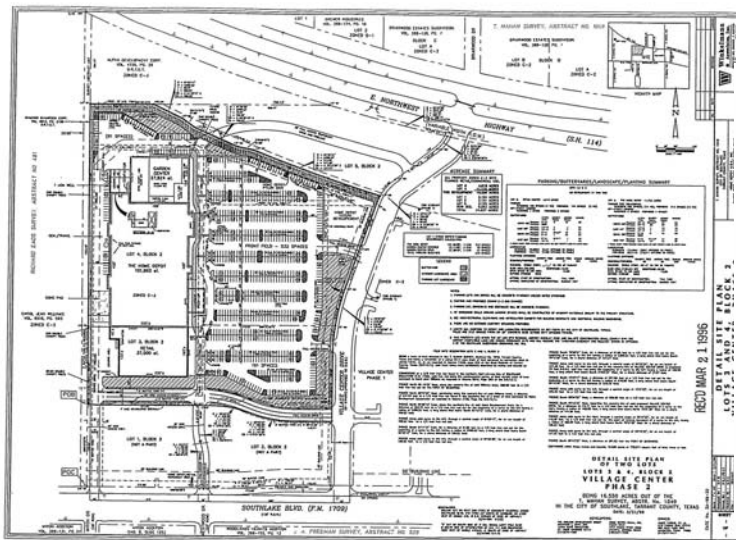
February 2, 2005



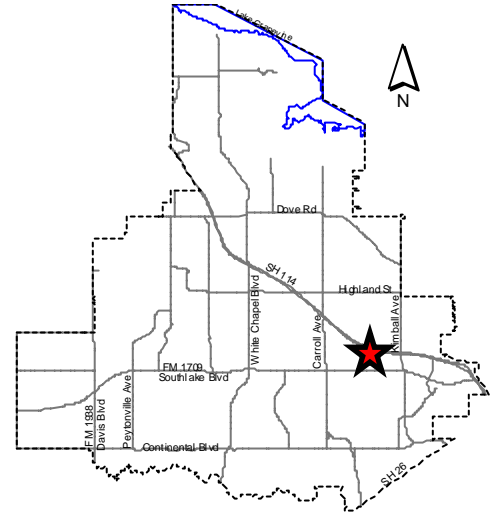
### OVERVIEW:

- Over 44 acres
- Zoning: "C-3" General Retail Commercial
- 286,000 s.f. of retail & grocery

**CONCEPT:** To provide a variety of shopping opportunities for all consumer needs, from groceries, restaurants, home improvement, and enhancement to banking, pets, beauty, and personal services.



**LOCATION:** The Village Center project is located on over 40 acres between State Highway 114 and Southlake Blvd. (F.M. 1709) on both sides of Village Center Drive.



**TENANT SUMMARY:**

- A Caring Doctor
- Aero Parts & Services International
- All-Safe Pest and Termite
- American Airlines Federal Credit Union
- Anne Wayne Salon and Spa
- Art and Frame Warehouse
- Birdwell Consulting Services
- Brad Love Distribution
- Chase Bank of Texas
- Chevron / Southlake Foodmart, LP
- Circle of Friends
- Commerce Title
- Comprehensive Rehabilitation
- Drexel Heritage
- Eagle Postal Center
- EmbroidMe
- Fantastic Sams
- Go2Landscapes
- H & R Block
- Home Depot
- Insideout Patio & Fireplace Shop
- Jack Shaw's Restaurant
- Just 4 NailsKinsale Group, Inc.
- Kroger
- O'Donnell's Landscape Services
- Optin Security
- Papa John's Pizza
- PetsMart
- PHO Texas
- Quizno's Classic Subs
- RadioShack
- Southlake Jewelers
- The Gallery
- Washington Mutual
- Wendy's

**CONTACTS:** The following contacts are familiar with the Village Center project:

**Leasing Agent**

Equity One  
Alex Remington  
(817) 572-6205  
[aremington@equityone.net](mailto:aremington@equityone.net)  
[www.equityone.net](http://www.equityone.net)

**City of Southlake**

Economic Development Department  
(817) 748-8039  
[econdev@ci.southlake.tx.us](mailto:econdev@ci.southlake.tx.us)  
[www.southlakesites.com](http://www.southlakesites.com)