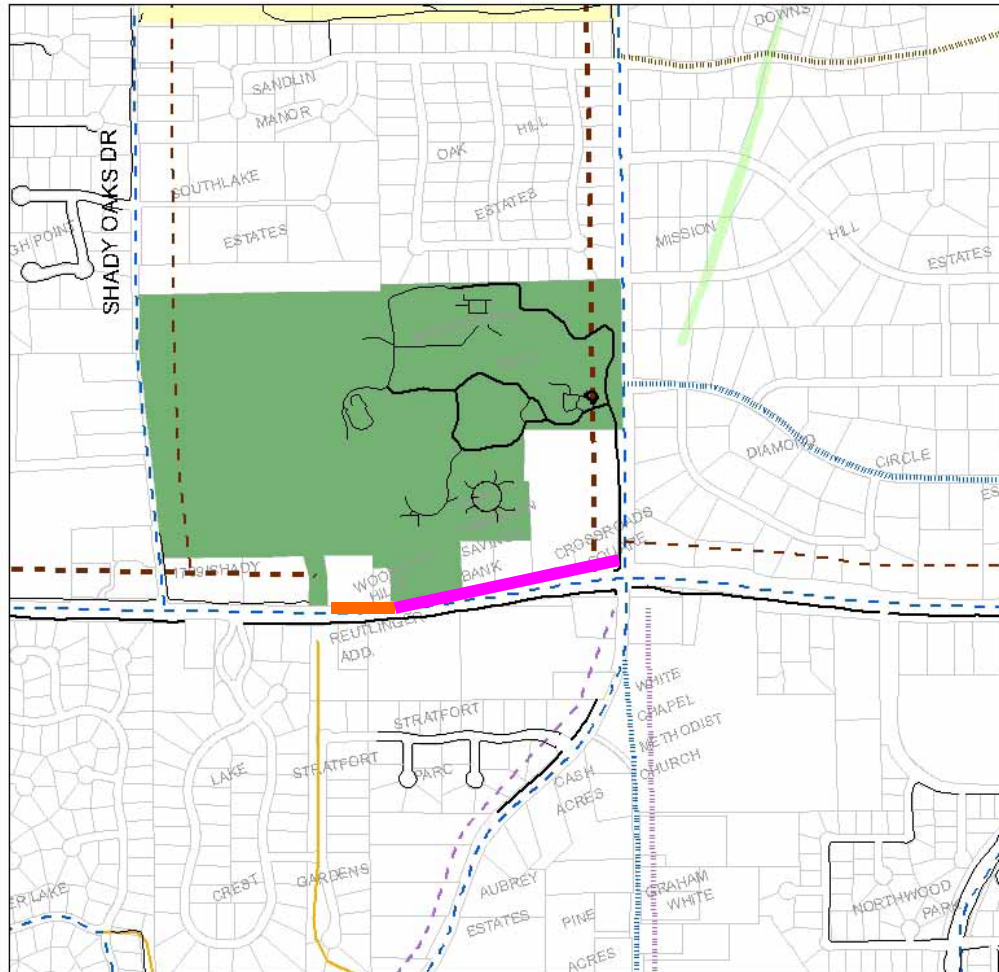


# Project Segment #2 – connecting from west side of North White Chapel along FM 1709 to future sidewalk at decel lane in front of Bicentennial Park. Southlake Sidewalk Plan Segment # 47a & b

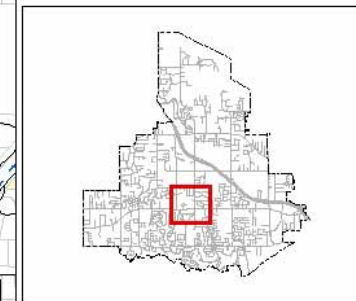
## Segment # 2



### Southlake Pathways Plan 2005 Update

- LEGEND**
- Existing Sidewalks\*
  - Existing Trails\*
  - Existing Equestrian/Hike Trails
  - Pathways Plan Segments**
  - - Equestrian/Hike - Planned
  - Multi-Use Trail 8'+ (Natural)
  - - Multi-Use Trail 8'+ (Planned)
  - Multi-Use Trail 8'+ (Programmed)
  - Multi-Use Trail 8'+ (Proposed)
  - - On-Street Bikeways (Planned)
  - - On-Street Bikeways (Proposed)
  - - Sidewalks <8' (Planned)
  - - Sidewalks <8' (Proposed)
  - Lake Grapevine
  - Public Parks
  - Parcels
  - Schools
  - 100-YR Flood Plain
  - Corps of Engineers Property

\*Only shown as it is represented as of 2005.







Shady Oaks

Existing sidewalk

Bicentennial Park

Decel lane

FM 1709

## Segment #2

Issues include need for wall and rail; and proposed decel lane



## Segment # 2



## **Segment # 2 information:**

**Length = approximately 1000 feet**

**Width and depth = 8 feet at 6 inches**

**Estimated cost = \$120,000**