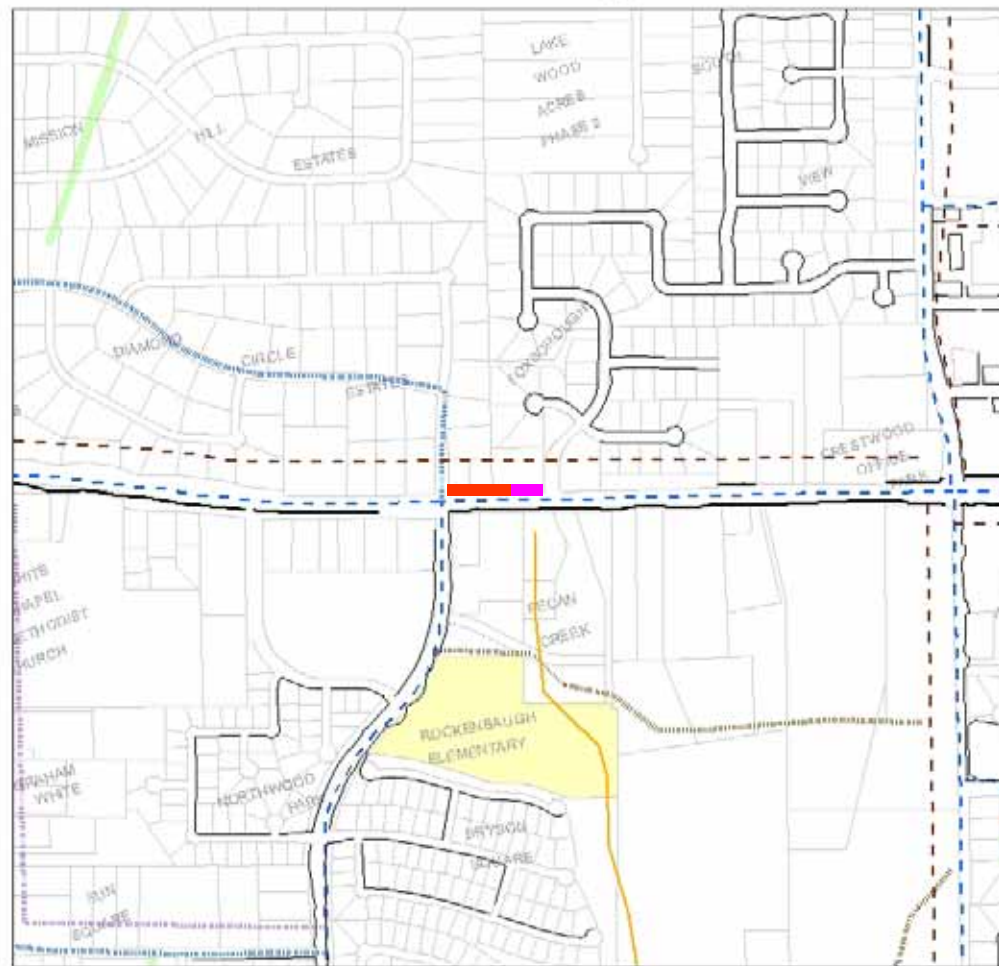


Project Segment #5 – connecting from west side of Foxborough Lane to Diamond Boulevard. Southlake Sidewalk Plan Segment # 25

Segment # 5



CITY OF SOUTHLAKE
SOUTHLAKE 2025
Southlake Pathways Plan 2005 Update

- LEGEND**
- Existing Sidewalks*
 - Existing Trails*
 - Existing Equestrian/Hike Trails
 - Pathways Plan Segments
 - - - Equestrian/Hike - Planned
 - Multi-Use Trail 2' - (Planned)
 - - - Multi-Use Trail 2' - (Planned)
 - - - Multi-Use Trail 2' - (Proposed)
 - - - Multi-Use Trail 2' - (Proposed)
 - - - On-Street Bikeway (Planned)
 - - - On-Street Bikeway (Proposed)
 - - - Sidewalk - 8' (Planned)
 - - - Sidewalk - 8' (Proposed)
 - Lake Grapes
 - Public Parks
 - Parcels
 - Schools
 - 100-Yr Flood Plain
 - Corps of Engineers Property





Segment # 5

There are no noted issues with this segment



Segment # 5

There are no noted issues with this segment



Segment # 5 information:

Length = approximately 450 feet

Width and depth = 8 feet at 6 inches

Estimated cost = \$30,465