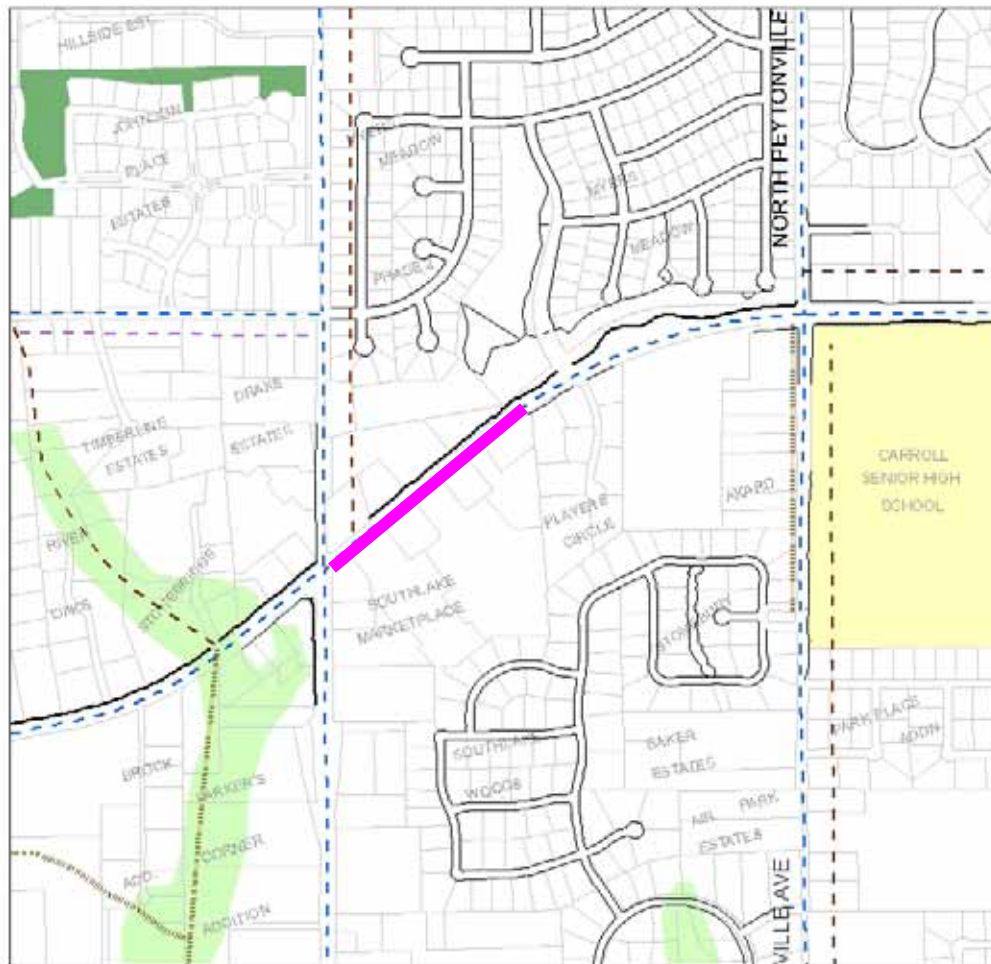


Project Segment #7 – existing sidewalk on the west side of Player’s Circle connecting to Davis Boulevard. Southlake Sidewalk Plan Segment # 104

Segment # 7



CITY OF SOUTHLAKE

SOUTHLAKE 2025

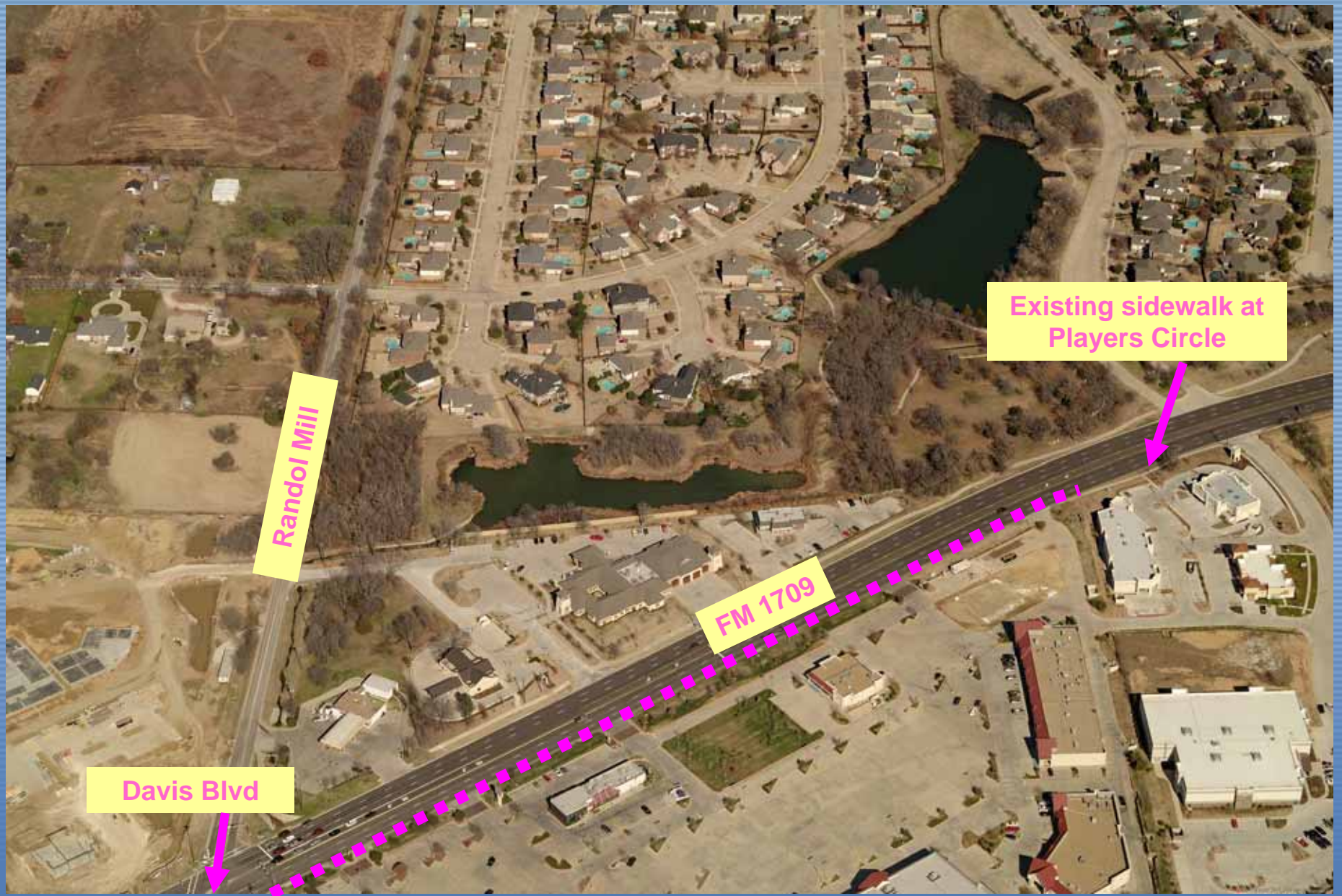
Southlake Pathways Plan 2005 Update

- LEGEND**
- Existing Sidewalks*
 - Existing Trails*
 - Existing Equestrian/Hike Trails
 - Pathways Plan Segments
 - Equestrian/Hike - Planned
 - Multi-Use Trail 1+ (Planned)
 - Multi-Use Trail 1+ (Proposed)
 - Multi-Use Trail 2+ (Planned)
 - Multi-Use Trail 2+ (Proposed)
 - On-Street Bikeways (Planned)
 - On-Street Bikeways (Proposed)
 - Sidewalk <8' (Planned)
 - Sidewalk <8' (Proposed)
 - Lake Grapes
 - Public Parks
 - Parks
 - Schools
 - 100-Yr Flood Plain
 - Corps of Engineers Property



*Data provided by the City of Southlake GIS Dept.





Randol Mill

Davis Blvd

FM 1709

Existing sidewalk at
Players Circle

Segment # 7

There are no noted issues with this segment



11/25/2008

Segment # 7



Segment # 7 information:

Length = approximately 1200 feet

Width and depth = 8 feet at 6 inches

Estimated cost = \$81,240