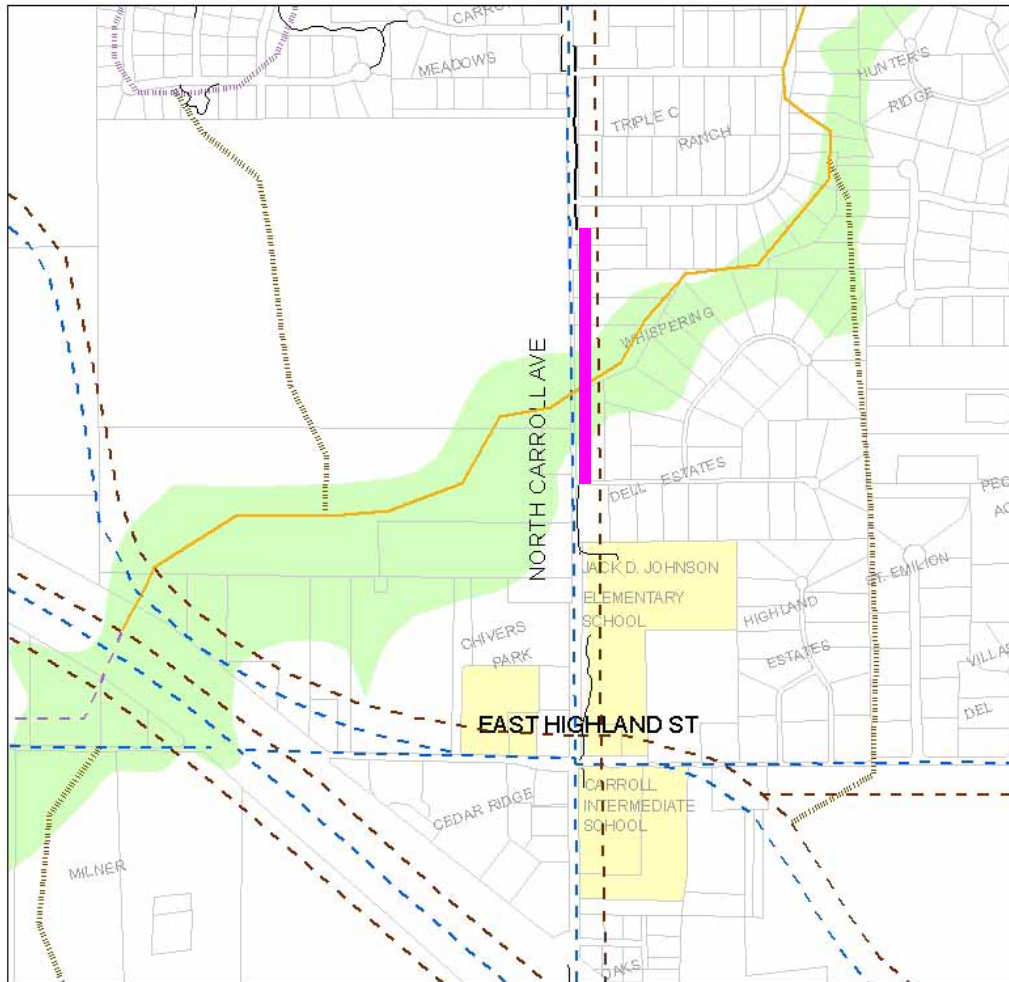


Project Segment #8 – east side of North Carroll Avenue from existing sidewalk at Bay Meadows Drive connecting to Whispering Lane. Southlake Sidewalk Plan Segment # 130.

Segment # 8



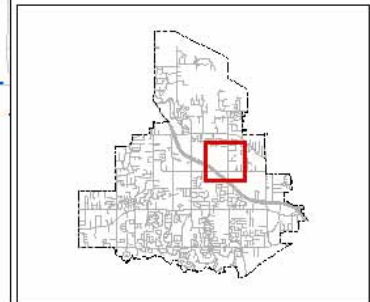
CITY OF SOUTHLAKE

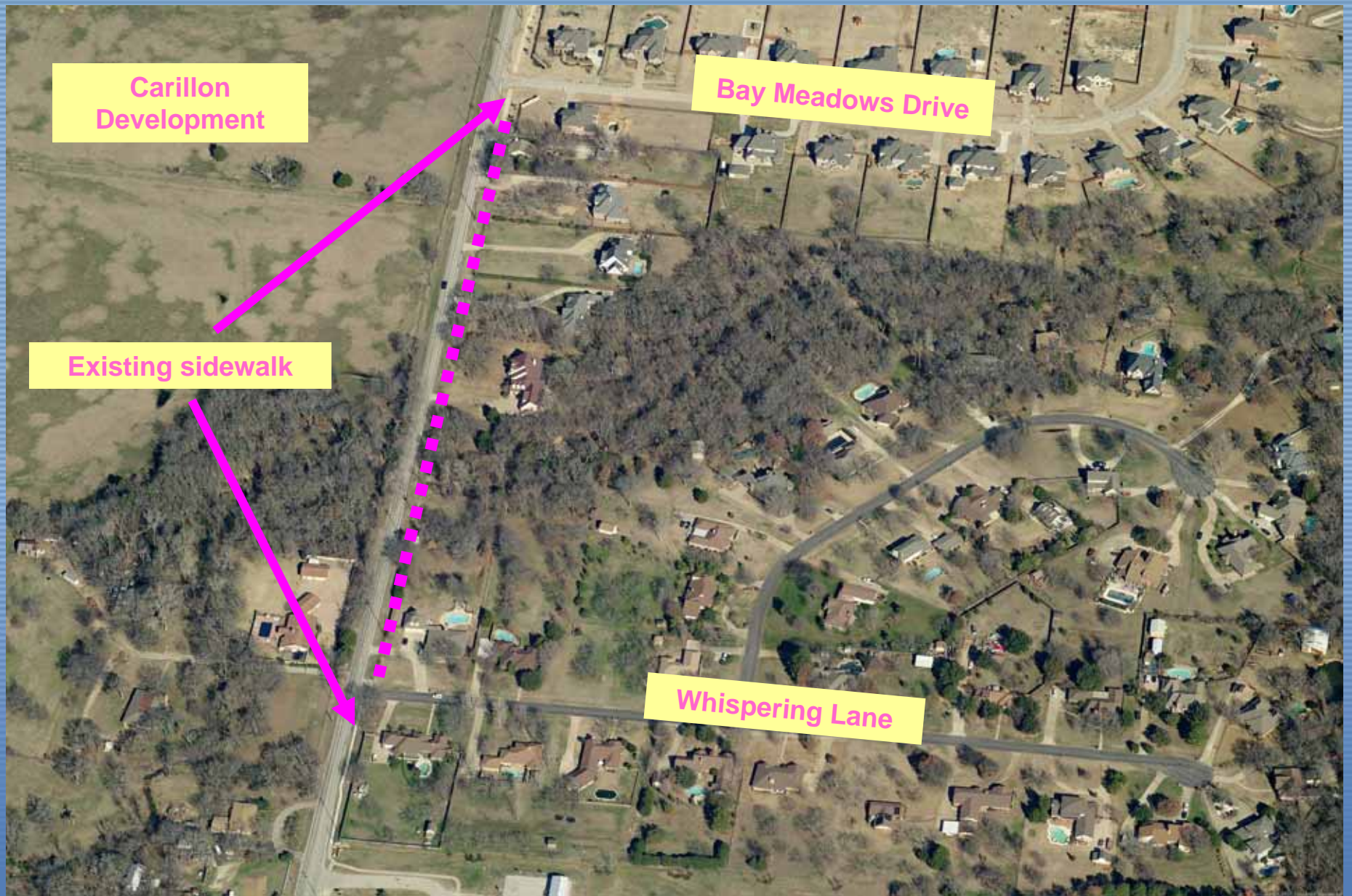
SOUTHLAKE 2025

Southlake Pathways Plan 2005 Update

- LEGEND**
- Existing Sidewalks*
 - Existing Trails*
 - Existing Equestrian/Hike Trails
 - Pathways Plan Segments**
 - - Equestrian/Hike - Planned
 - Multi-Use Trail 8'+ (Natural)
 - - Multi-Use Trail 8'+ (Planned)
 - - Multi-Use Trail 8'+ (Programmed)
 - - Multi-Use Trail 8'+ (Proposed)
 - - On-Street Bikeways (Planned)
 - - On-Street Bikeways (Proposed)
 - - Sidewalks <8' (Planned)
 - - Sidewalks <8' (Proposed)
 - Lake Grapevine
 - Public Parks
 - Parcels
 - Schools
 - 100-YR Flood Plain
 - Corps of Engineers Property

*City of Southlake 2005 Update





Carillon
Development

Bay Meadows Drive

Existing sidewalk

Whispering Lane

Segment # 8

Issues include trees, right-of-way, bridge/culvert



Segment # 8 information:

Length = approximately 1000 feet

Width and depth = 5 feet at 4 inches

Estimated cost = \$150,000