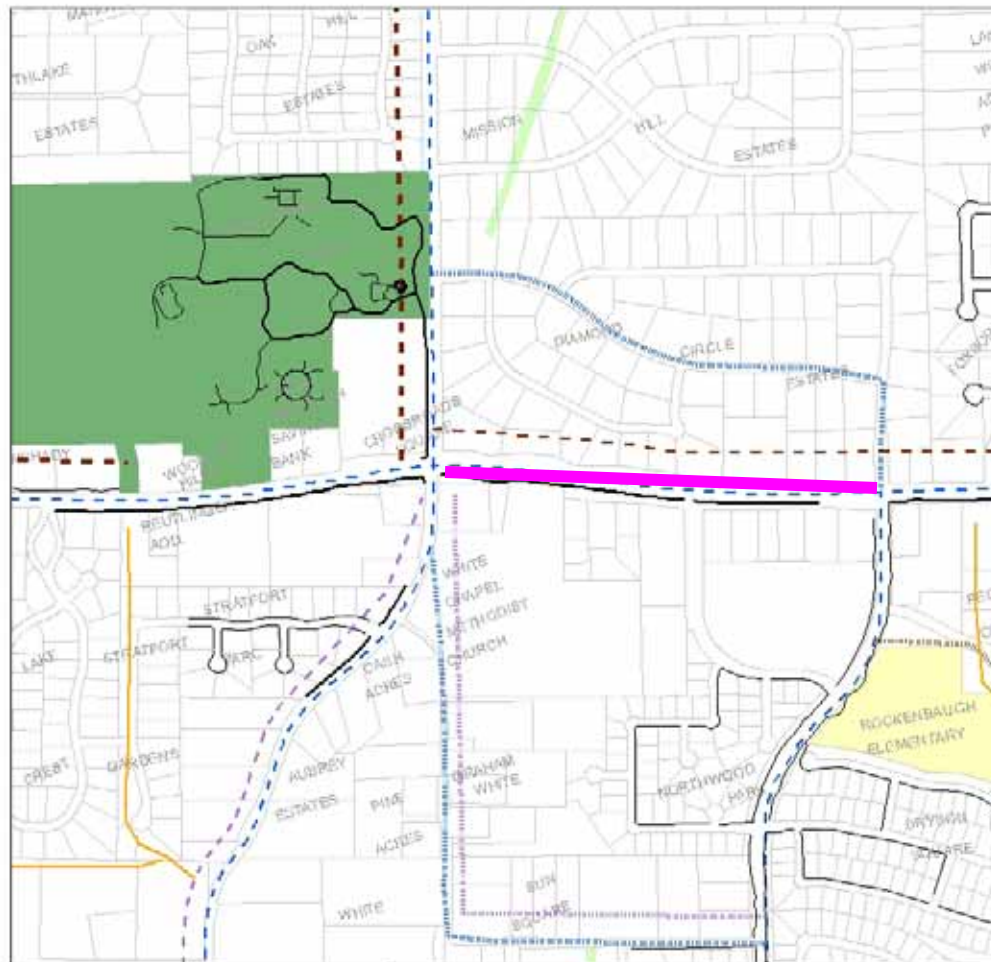


Project Segment #9 – connecting from west side of Diamond Boulevard along FM 1709 to White Chapel Boulevard. Southlake Sidewalk Plan Segment # 129

Segment # 9



CITY OF SOUTH LAKE
SOUTH LAKE 2025

Southlake Pathways Plan 2005 Update

- LEGEND**
- Existing Sidewalks*
 - Existing Trails*
 - Existing Equestrian/Hike Trails
 - Pathways Plan Segments
 - - Equestrian/Hike - Planned
 - Multi-Use Trail 2+ (Planned)
 - - Multi-Use Trail 2+ (Planned)
 - - Multi-Use Trail 2+ (Proposed)
 - - Multi-Use Trail 2+ (Proposed)
 - - On-Street Bikeways (Planned)
 - - On-Street Bikeways (Proposed)
 - - Sidewalk <8' (Planned)
 - - Sidewalk <8' (Proposed)
 - Lake Grapes
 - Public Parks
 - Parks
 - Schools
 - 100-Yr Flood Plain
 - Corps of Engineers Property







CITY OF
SOUTHLAKE

Segment # 9

Issues include utilities and retaining wall



Segment # 9 information:

Length = approximately 2000 feet

Width and depth = 8 feet at 6 inches

Estimated cost = \$135,400