

# Safety Spotlight

## Know Two Ways Out

### October 2017

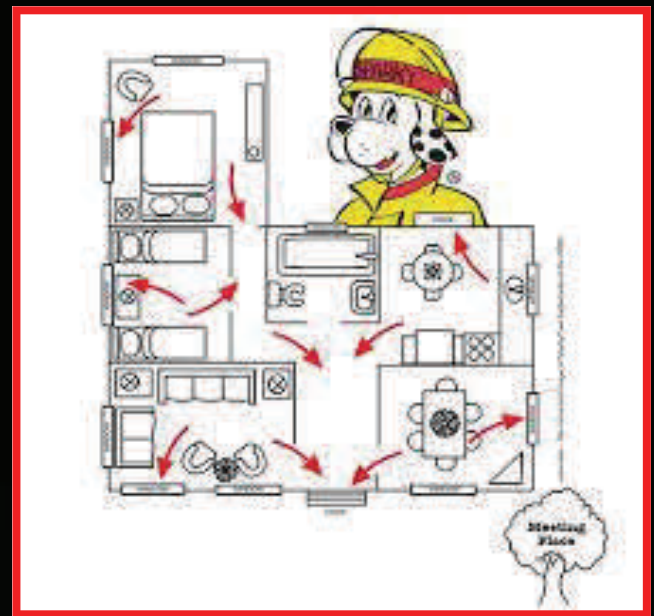


#### Fire safety from the National Fire Protection Association

Consider this scenario: It's 2 o'clock in the morning. You and your family are fast asleep when you awaken to the smoke alarm sounding and the smell of smoke. What do you do? If you and your family don't have a plan in place, it could jeopardize your safety. In a typical home fire, you may have as little as one to two minutes to escape safely from the time the smoke alarm sounds. That's why home escape planning is so critical in a fire situation. It ensures that everyone in the household knows how to use that small window of time.

#### Create your escape plan

- ◇ Talk about your plan with everyone in your home.
- ◇ Draw a map of your home showing all doors and windows. Visit each room. Find two ways out.
- ◇ Verify all windows and doors open easily.
- ◇ Make sure your home has smoke alarms. Push the test button to make sure each alarm is working.
- ◇ Pick a meeting place outside such as the mailbox, a tree, or a neighbor's house.
- ◇ Make sure your house or building number can be seen from the street.



#### Reminders

Once outside **never** re-enter the house.

Call the fire department from a neighbors house or cell phone once safely outside.

#### Did You Know?

A closed door may slow the spread of smoke, heat and fire.

Smoke alarms should be installed in every sleeping room and outside each sleeping area.



#### Life Preservation Through Public Education

Fire Education

Renni Burt

rburt@ci.southlake.tx.us

817-748-8349



Police Education

Valerie Snyder

vsnyder@ci.southlake.tx.us

817-748-8173

Visit us on Facebook at: SouthlakePublicSafety